

# Uni-COM™ Modules

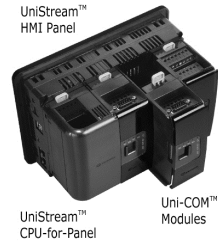
## Installation Guide

UAC-01RS2 ,UAC-02RS2 ,UAC-02RSC

Uni-COM™ is a family of communication modules that are compatible with the UniStream™ control platform. This guide provides basic installation information for the UAC-01RS2, UAC-02RS2 and UAC-02RSC modules.

Technical specifications may be downloaded from the Unitronics website.

The UniStream™ platform comprises CPU controllers, HMI panels, Communication modules and local I/O modules that snap together to form an all-in-one Programmable Logic Controller (PLC).



The maximum number of Uni-COM™ modules that can be connected to a single CPU controller is limited. For details, please refer to the specification sheet of the UniStream™ CPU.

## Before You Begin



Before installing the device, the installer must:

- Read and understand this document.
- Verify the Kit Contents.


Uni-COM™ modules may only be installed onto a UniStream™ HMI Panel; the Panel must comprise a CPU-for-Panel, installed according to the CPU-for-Panel installation guide.

## Alert Symbols and General Restrictions

When any of the following symbols appear, read the associated information carefully.

<i>Symbol</i>	<i>Meaning</i>	<i>Description</i>
	<b>Danger</b>	<b><i>The identified danger causes physical and property damage.</i></b>
	<b>Warning</b>	<b><i>The identified danger could cause physical and property damage.</i></b>
<b>Caution</b>	<b>Caution</b>	<b><i>Use caution.</i></b>

- All examples and diagrams are intended to aid understanding, and do not guarantee operation. Unitronics accepts no responsibility for actual use of this product based on these examples.
- Please dispose of this product according to local and national standards and regulations.
- This product should be installed only by qualified personnel.

-  Failure to comply with appropriate safety guidelines can cause severe injury or property damage.
- Do not attempt to use this device with parameters that exceed permissible levels.
- Do not connect/disconnect the device when power is on.

**Environmental Considerations**



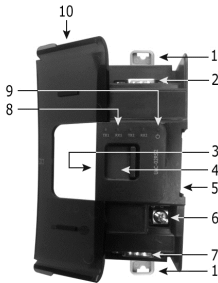
- Ventilation: 10mm (0.4”) of space is required between the device top/bottom edges and the enclosure’s walls.
- Do not install in areas with: excessive or conductive dust, corrosive or flammable gas, moisture or rain, excessive heat, regular impact shocks or excessive vibration, in accordance with the standards and limitations given in the product’s technical specification sheet.
- Do not place in water or let water leak onto the unit.
- Do not allow debris to fall inside the unit during installation.
- Install at maximum distance from high-voltage cables and power equipment.

**Kit Contents**

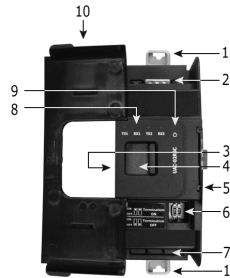
- 1 Uni-COM™ module
- 1 RS485 terminal block (UAC-02RSC)

**Uni-COM™ Diagram**

UAC-01RS2, UAC-02RS2



UAC-02RSC



1	DIN-rail clips	Physically hold the module on the back of the panel.
2	Port 1	RS232 Port
3	IO/COM Bus-Left	Left-side Connector
4	Bus Connector Lock	Slide the Bus Connector Lock to the left, to electrically connect the Uni-COM™ module to the CPU or to adjacent Uni-COM™ module.
5	IO/COM Bus-Right	Right-Side Connector, shipped covered.
	Bus Connector Cover	Leave covered when not in use.
6	Functional Ground Terminal	Connect to the system earth (on UAC-01RS2 and UAC-02RS2)
	DIP switch	RS485 termination selection DIP switch (on UAC-02RSC)
7	Port 2	RS232 Port (UAC-02RS2); RS485 Port (UAC-02RSC).
8	Channel LEDs	Green LEDs
9	Status LED	Green LED

**NOTE** ▪ Refer to the module's specification sheet for LED indications.

10	Module door	Shipped covered with protective tape to prevent the door from being scratched. Remove tape during installation.
----	-------------	---

## About the IO/COM Bus Connectors

The IO/COM Bus connectors provide the physical and electrical connection points between modules. The right side connector is shipped covered by a protective cover, protecting the connector from debris, damage, and ESD.

The IO/COM Bus - Left (#3 in diagram) can only be connected to either a CPU-for-Panel or another Uni-COM™ module.

The IO/COM Bus - Right (#5 in diagram) can be connected to another Uni-COM™ module, to an I/O module, or to the Base Unit of the Local Expansion Adapter.

- Note**
- Uni-COM™ modules can only be installed on the back of the UniStream™ HMI Panel.
  - Uni-COM™ modules must immediately follow the CPU-for-Panel. No Uni-I/O™ module may be installed between the CPU and a Uni-COM™ module.
  - If the Uni-COM™ module is located last in the configuration, and nothing is to be connected to it, do not remove its Bus Connector Cover.
  - Uni-COM™ modules cannot be connected on a DIN rail via a Local Expansion Adapter.

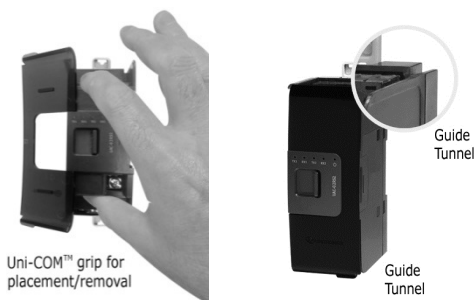
## Installation

- ⚠
- Turn off system power before connecting or disconnecting any module or device.
  - Use proper precautions to prevent Electro-Static Discharge (ESD).

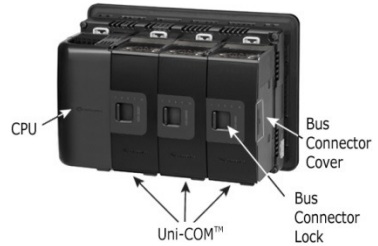
### Installing a Uni-COM™ Module onto a UniStream™ HMI Panel

**NOTE** The DIN-rail type structure on the back of the panel provides the physical support for the Uni-COM™ module.

1. Check the unit to which you will connect the Uni-COM™ module to verify that its Bus Connector is not covered.  
If the Uni-COM™ module is to be the last one in the configuration, do not remove the cover of its IO/COM Bus-Right connector.
2. Open the door of the Uni-COM™ module and hold it as shown in the accompanying figure.
3. Use the upper and lower guide-tunnels (tongue & groove) to slide the Uni-COM™ module into place.
4. Verify that the DIN-rail clips located at the top and bottom of the Uni-COM™ module have snapped onto the DIN-rail.



- Slide the Bus Connector Lock all the way to the left as shown in the accompanying figure.
- If there is already a module located to its right, complete the connection by sliding the Bus Connector lock of the adjacent unit to the left.
- If the module is the last in the configuration, leave the IO/COM Bus Connector covered.



## Removing a Module

- Turn off the system power.
- Disconnect the connectors from the COM ports (#2,7 in the Uni-COM™ Diagram on page 2).
- Disconnect the Uni-COM™ module from the adjacent units: slide its Bus Connector Lock to the right. If there is a unit located on its right, slide the lock of this module to the right as well.
- On the Uni-COM™ module, pull the top DIN-rail clip up and the bottom clip down.
- Open the door of the Uni-COM™ and hold it with two fingers as shown in the figure on page 3; then pull it carefully from its place.

## Numbering Modules

You can number modules for reference purposes. A set of 20 stickers is provided with every CPU-for-Panel; use these stickers to number the modules.



- The set contains numbered and blank stickers as shown in the figure to the left.
- Place them on the modules as shown in the figure to the right.



## Wiring



- All wiring activities should be performed while power is OFF.
- Unused points should not be connected (unless otherwise specified). Ignoring this directive may damage the device.
- Double-check all wiring before turning on the power supply.

### Caution

- To avoid damaging the wire, use a maximum torque of 0.5 N·m (5 kgf·cm).
- Do not use tin, solder, or any substance on stripped wire that might cause the wire strand to break.
- Install at maximum distance from high-voltage cables and power equipment.

## Wiring Procedure

### Functional ground terminal (⚡) (UAC-01RS2 and UAC-02RS2)

Use a wire of minimum thickness of 14 AWG (2 mm<sup>2</sup>); terminate it with a ring or fork crimp terminal, stud size #6.

Tighten the screw enough to make sure the ring/fork crimp terminal is not loose.

### RS485 terminal block (UAC-02RSC)

Use crimp terminals for wiring; use 26-12 AWG wire (0.13 mm<sup>2</sup> –3.31 mm<sup>2</sup>).

1. Strip the wire to a length of 7±0.5mm (0.275±0.020 inches).
2. Unscrew the terminal to its widest position before inserting a wire.
3. Insert the wire completely into the terminal to ensure a proper connection.
4. Tighten enough to keep the wire from pulling free.

## Wiring Guidelines

In order to ensure that the device will operate properly and to avoid electromagnetic interference:

- Use a metal cabinet. Make sure the cabinet and its doors are properly earthed.
- **UAC-01RS2 and UAC-02RS2:**  
Connect the functional ground terminal (⚡) to the earth of the system (preferably to the metal cabinet chassis).  
Use the shortest and thickest wires possible: less than 1m (3.3') in length, minimum thickness 14 AWG (2 mm<sup>2</sup>).
- **UAC-02RSC:**  
Connect the functional ground terminal (⚡) at the RS485 terminal block to the earth of the system (preferably to the metal cabinet chassis).  
Use the shortest and thickest wires possible: less than 1m (3.3') in length, minimum thickness 14 AWG (2 mm<sup>2</sup>).  
**Note** that the UAC-02RSC must be earthed thru the RS485 terminal block even if only the RS232 is in use.

**NOTE** For detailed information, refer to the document System Wiring Guidelines, located in the Technical Library in the Unitronics' website.

## RS232



- Turn off power before making any communications connections.

Pin Number	Pin Name	Direction	Description
1	DCD	In	Data Carrier Detect
2	RXD	In	Receive Data
3	TXD	Out	Transmit Data
4	-	-	Not connected (see note)
5	SG	Return	Signal Ground
6	-	-	Not connected (see note)
7	RTS	Out	Request To Send
8	CTS	In	Clear To Send
9	-	-	Not connected (see note)

**NOTE** Unused RS232 signals may be connected to these pins.

**RS485**




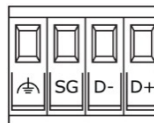
- Turn off power before making any communications connections.

Use the RS485 port to create a multi-drop network.

The UAC-02RSC is shipped with a 4 pin RS485 terminal block. This connector is marked with a pin assignment that is identical to the corresponding marking on the UAC-02RSC.

**RS485  
Wiring**

- D+ Tx/Rx+ (B)
- D- Tx/Rx- (A)
- SG Signal Ground
-  Functional Ground



- Use shielded twisted-pair cable, in compliance with EIA RS485 specifications.
- When wiring each node, connect the cable shield to the functional ground point of the RS485 terminal block.

**NOTE** The functional ground point of the RS485 terminal block serves also as the module earthing point. Refer to the Wiring Guidelines clause for more details.

**RS485 Termination**

Use the DIP switches shown in the Uni-COM diagram on page 2 to set the RS485 termination according to the accompanying table.

The device is shipped with both its DIP switches set to ON; change settings if the device is not at one of the ends of the RS485 network.

Position		DIP Switch State
1	2	
ON	ON	Terminated (factory default)
OFF	OFF	Not Terminated

The information in this document reflects products at the date of printing. Untronics reserves the right, subject to all applicable laws, at any time, at its sole discretion, and without notice, to discontinue or change the features, designs, materials and other specifications of its products, and to either permanently or temporarily withdraw any of the foregoing from the market.

All information in this document is provided "as is" without warranty of any kind, either expressed or implied, including but not limited to any implied warranties of merchantability, fitness for a particular purpose, or non-infringement. Untronics assumes no responsibility for errors or omissions in the information presented in this document. In no event shall Untronics be liable for any special, incidental, indirect or consequential damages of any kind, or any damages whatsoever arising out of or in connection with the use or performance of this information.

The tradenames, trademarks, logos and service marks presented in this document, including their design, are the property of Untronics (1989) (R"G) Ltd. or other third parties and you are not permitted to use them without the prior written consent of Untronics or such third party as may own them.